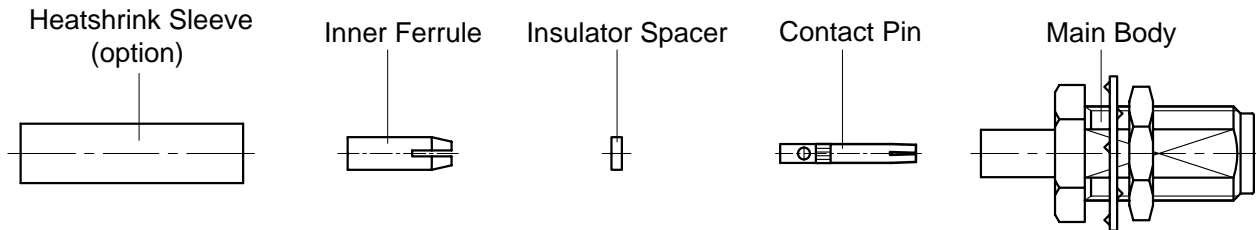


P/N: 60-02-2M23-054 (REV. C)

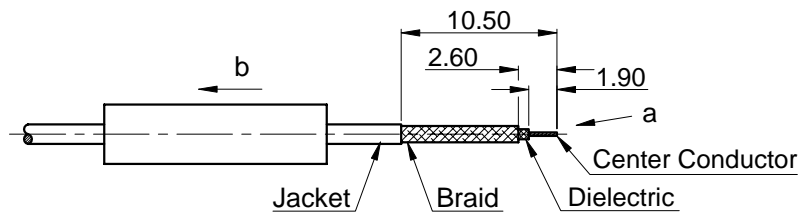
Description: SMA Straight Bulkhead Female Solder for 1.13mm/1.32mm Cable



STEP 1

- Strip the cable according to the dimensions as below, then immersion tin the braid and center conductor.
- Slide the Heatshrink Sleeve onto the cable (option).

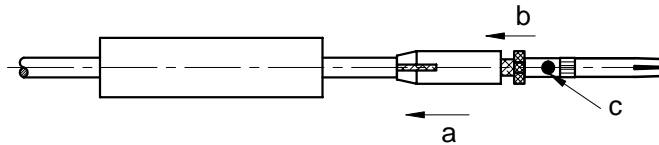
Tips: Do not nick the cable's dielectric and center conductor.



STEP 2

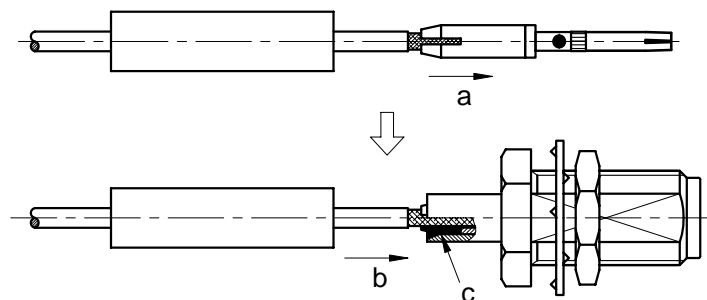
- Slide the Inner Ferrule onto the cable's braid as below.
- Slide the Insulator Spacer onto the cable's dielectric.
- Solder the Contact Pin onto the cable.

Tips: Attention the direction of the Inner Ferrule.



STEP 3

- Pull down the Inner Ferrule until it stops.
- Use a nipper push the Inner Ferrule to slide the cable assembly into the Main Body until it stops.
- Solder the cable's braid, Inner Ferrule and Main Body together.



STEP 4

- Slide the Heatshrink Sleeve over the Main Body and heatshrink it in place (option).

